



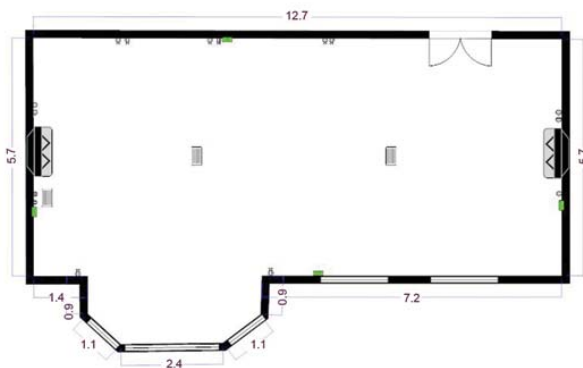
The Library:

- | | |
|----------------|------------------|
| Theatre - 50 | U shaped - 14 |
| Classroom - 18 | Dining - 40 |
| Boardroom - 20 | Oval Dining - 20 |



The Nesfield Suite

- | | |
|----------------|------------------|
| Theatre - 70 | U shaped - 20 |
| Classroom - 24 | Dining - 40 |
| Boardroom - 24 | Oval Dining - 24 |



The Mawson Suite

- | | |
|----------------|------------------|
| Theatre - 80 | U shaped - 30 |
| Classroom - 50 | Dining - 70 |
| Boardroom - 35 | Oval Dining - 35 |



HAMPTON
MANOR
Meetings





Meeting rooms

Mawson Suite:

A beautiful period room filled with natural light and offering generous space for a range of meeting layouts. The high ceiling, original mirrors and extensive windows give a feel of space and openness complemented by views of the formal gardens.

The Library:

Oak panelling, double aspect views and a grand fireplace, this room was once Sir Frederick Peel's private library. It now makes an impressive board room.

Nesfield Suite:

The contemporary decor gives a stylish look to this traditional oak panelled room. The room offers views onto the Acer garden as well as the striking clock tower, designed by William Eden Nesfield.

Packages

Day Delegate £60/head

Your rate includes the hire of the principal room, flip chart, stationery, WIFI, table water, 2 course hot and cold lunch, coffee with pastries or biscuits.

Half Day Delegate £40/head

If you require a shorter stay, we can offer half day packages, which include all the options of the day delegate package including lunch.

24 Hour Delegate £230/head

Includes all the elements of the day delegate package as well as a 3 course evening dinner, bed & cooked breakfast.

(all prices exclusive of VAT)

Team Building

The 45 acre estate is ideal for a wide range of corporate events such as archery, clay pigeon shooting, Segway riding, murder mystery parties and wine tasting.



Meeting rooms

Jacobs:

Once Frederick Peel's study, this discrete panelled room is an ideal setting for a small private board meeting or break out room.

The Lounge:

Comfortable lounge space ideal for informal meetings. Seats up to 6 people with TV and tea and coffee making facilities.

Public areas:

With Sir Fred's bar and the spacious seating in reception, there is ample room for a break out space outside the meeting rooms.

Exclusive use available

Accommodation

We have a stunning collection of 12 individually designed hotel rooms that offer beautiful woodland views, feature bathrooms with monsoon showers, historic features, contemporary furnishings and the highest level of comfort.

Food

Our award winning chef Martyn Pearn can complement your day with his superb freshly cooked food. He is passionate about ensuring that your menus are designed for your event with the finest of ingredients.

Facilities

Full audio visual connectivity, fixed or wireless connectivity throughout the building.

